



Nursery Geese Autumn 1 Newsletter

## Welcome to 2024- 25!

We hope you all had a lovely Summer break! We would like to welcome all our new children, parents and carers to the Gainsborough family. We look forward to getting to know you all more and a term full of exciting learning!

Adults Working in Nursery Geese:

Class Teacher: Ms Kelsall

Specialist teacher

Forest school and Art: Ms Castellvi

P.E: Coach Terry

# Welcome to Nursery



Our learning will be centered around 'Families' and 'Friendship' this term

The EYFS Curriculum

There are 7 areas of the EYFS curriculum which we cover in our indoor and outdoor provision. These areas are:

Prime Areas

- Communication and Language
- Personal, Social and Emotional Development

- Physical Development

Specific Areas

- Literacy (writing/reading)
- Maths
- Understanding the World
- Expressive Arts and Design

## Maths

In Nursery, children will have opportunities to explore mathematical concepts in all areas of the provision. We will be focusing on developing fast recognition of up to 3 objects (subitising), and learn about what is the same and different about collection of objects.

## Writing

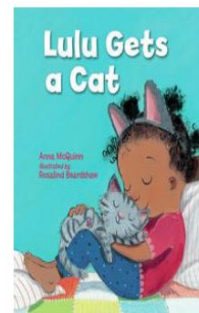
Our learnings this half term are based around the topics; All about me, My community and Animals. We will explore what we like and dislike, building friendships and learning how to self/ co-regulate our emotions.

Our core texts for this term are:

Hello Friend

So much!

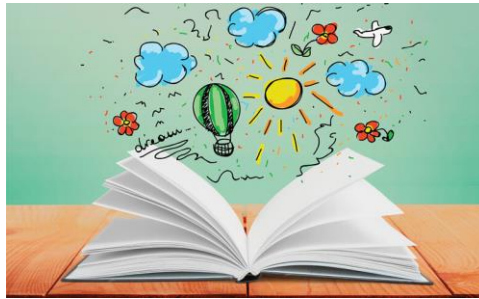
Lulu gets a cat



We will have mark making opportunities in different areas of the provision. We will explore using different tools to make marks and begin to give meaning to them.

## Reading book packs: Homework

We will be giving out reading book packs to children and family to read at home. This includes activities relevant to the story that supports children's writing and communication skills. Each book pack will be given out **every Friday** and should be returned on the following **Tuesday**.



## Topic

All About Me

In the first two weeks we will share experiences of our home, family, friends and communities. Please bring in a family picture of your child from home or send one to [admin@gainsborough.hackney.sch.uk](mailto:admin@gainsborough.hackney.sch.uk) with the title 'Nursery photo'. We will use these to discuss the similarities and differences in different families. These pictures will also be used on our family tree in the home corner to represent children's families.

## Forest School

Forest School is a fantastic opportunity to learn outdoors. **Forest School will take place from week 4 in the playground in Autumn 1.** Children will need to come to school in suitable Forest School clothing as we learn the skills needed to be safe and successful at Forest School.

Children will need wellington boots and puddle suits, our sessions will be every **Tuesday**.

## P.E

P.E. sessions will take place **every Thursday**, Please ensure your child is wearing a school PE kit when they come to school on Thursdays.

## Seesaw

We will be using Seesaw (<http://seesaw.me>), an online journal to document what your child's learning in class.

In order to view your child's journal you will be invited via a school letter. You will need to download the family app to your phone (giving you access to your child's learning journal) and choose to be notified when new content is added.



## Key workers

Your child will be assigned a key worker. The key worker approach is an effective way of enabling children to develop a strong relationship with a significant adult in the setting. It also enables each child to feel secure and cared for, helping them to become familiar with the Nursery environment and develop confidence and a feeling of security within it.

## Floor Book

Each class will have a floor book to record all the learnings in both carpet sessions and continuous provisions that children have engaged in as a class. Over the term children will have opportunities to refer back to their previous learning and add comments if they want to.

## Family Fridays

We would like to invite you into our class to do activities with your child from 8:45-9:30am every other Friday. Our Family Friday dates for Geese are:

October 4th 2024 - All about ME!

October 18th 2024 -Pet themed activities.



## Junk modeling and loose parts

We use a lot of natural resources in our play to provoke imagination and we would appreciate your help with recycling items for our junk modeling sessions, such as: water bottles, cardboard boxes, or any loose part items such as lids, corks, pinecones, pebbles and shells.



## Useful information

- Water bottles: Children do not need to bring a water bottle to school as we provide individual bottles in class.
- Label uniforms and spare clothes: Please provide a spare change of clothes for your child and label the uniforms.
- Clubs
  - Breakfast clubs 8.00-8.45
  - After school clubs 3.45-5.00
  - Playcentre 5.00-6.00

Please note our after school club will not provide dinners for children, please bring snacks for your child if you have signed up for after school clubs.

[Visit our website for dates, news and other information](#)